

GSC assignment - 3 (09-04-2020)

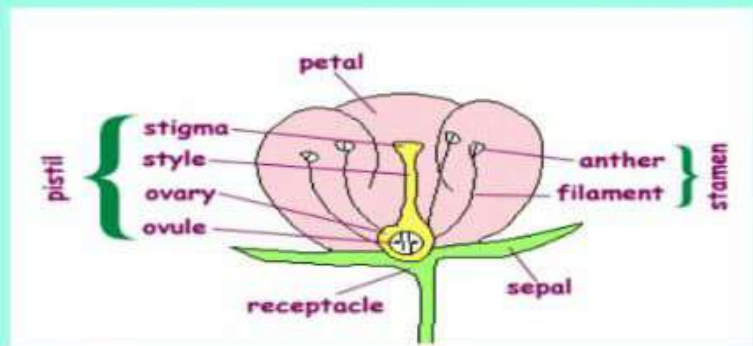
Class 5

Reproduction in flowering plants

1Q: What are the four main parts of a flower? How do they help flower?

Ans: Four main parts of a flower are:

1. Sepal
2. Petal
3. Stamen
4. Pistil



Functions of different parts:

1. Sepal : Sepals protect the developing bud.
2. Petal: Petals attract the insects for pollination.
3. Stamen: It contains male reproductive cells that is pollen grains.
4. Pistil : it contains female reproductive cells that is ovules.

2.Q: Name the part of the flower where pollen grains are stored. What is the importance of pollen grains?

Ans: Pollen grains are stored in the anther of the stamen. Pollen grains are the male gamete cells.

3.Q: Name the male and female part of the flower.

Ans: Stamen is the male part of the flower and pistil is the female part of the flower.

4.Q: What is pollination?

Ans: The transfer of pollen grains from stamen of one flower to the stigma of the pistil of same flower or another flower is called pollination.

5.Q: What is fertilization?

Ans: The fusion of male gamete cell with female gamete cell to form a zygote is called fertilization.

II) Fill in the blanks:

1. of the Dahlia can give rise to a new plants.
2. In onion, new plants grow from
3. is the female part of the flower.
4. The transfer of the pollen grains to the female part of the flower is called as.....
5. The ovary changes into a and the ovules change into after fertilization.

Ans: 1. Roots 2. Bulb 3. Pistil
4. pollination 5. fruit , seeds

Dear students , write down above Q/Ans and blanks in a rough notebook and learn well.

 STAY HOME AND STAY SAFE 